

**Springhare**      *Pedetes capensis*



With its short front legs, long powerful hind legs and long tail, the springhare bears a striking resemblance to a miniature kangaroo.

Size: Height 39cm; tail 40cm; mass 3.1kg.

Habitat: Nocturnal; congregates in scattered groups when feeding; usually feeds within 250m of burrow.

Food: Mainly grass.

Hind foot: 5cm

Forefoot: 4cm



**Vervet Monkey**      *Cercopithecus mitis*



The little black-faced primate's upperparts are grizzled, the under parts whitish.

Size: Length 95-130cm; mass 3.5-8 kg.

Habitat: Mainly savannah woodland.

Habits: Diurnal; active from dawn till midmorning, when it rests in a sheltered area until early in the afternoon (in hot weather), after which it continues foraging. Spends much of its time in trees searching for wild fruits, but also feeds on the ground. Troops comprise up to 20 members.

Food: The vervet monkey is for the most part a vegetarian, living on wild fruits, flowers, seeds and seed pods.

Hand: 8cm

Foot: 10cm



**Chacma baboon**     *Papio cynocephalus*



This is the largest of southern Africa's primates (other than humans). Chacma baboons are formidable, especially the males: their canines are longer than those of a lion.

Size: Length 1-1.6m; mass 25-45kg.

Habitat: Widely distributed; primarily savannah environment but also in mountainous areas and on the fore fringes.

Habits: A gregarious species; usually associated with Impala herds; troops may number up to 100 individuals. Diurnal; at night they sleep on high krantzies or in trees with thick foliage.

Food: Omnivorous; diet includes grasses, leaves, roots, bulbs, seeds, flowers, wild fruits, pods and shoots. Turns over stones in search of insects, arachnids and slugs.

Hand: 8cm

Foot: 15cm



**African Civet**

*Civettictis civeta*



The civet has a greyish or whitish shaggy coat with black spots on the body, black stripes on the tail and neck. The lower parts of the legs are black, the tail bushy.

Size: Length 1.2-1.4cm; mass 9-15kg.

Habitat: Well-watered savannah and forest.

Habits: Predominantly nocturnal; generally solitary.

Food: Omnivorous; diet includes insects; wild fruit; mice; reptiles; birds; amphibian, myriapods (centipedes and millipedes), arachnids and carrion.

Forefoot: 5.5cm.

Hind foot: 6cm.



## Small-spotted Genet

*Genetta genetta*



Distinguished from the large-spotted genet by a crest of black hair along the back, a longer and coarser coat, blacker on the hind feet, darker body spots and (usually) white-tipped. Its sharp, curved, extendible claws do not show in the spoor.

Size: Length 86-100cm; mass 1.5-2.6kg.

Habitat: The more open areas of savannah woodland, dry grassland and dry vlei areas.

Habits: Nocturnal; mainly solitary, but also found in pairs.

Food: Small rodents, birds, reptiles, insects, spiders and scorpions.

Forefoot: 2.6cm.

Hind foot: 3cm.



**Large-spotted Genet**

*Genetta tigrina*



Similar to the small-spotted genet but lacks the spinal crest and has a black-tipped tail. The spots on the body are generally larger than those of its small-spotted cousin.

Size: Length 85-110cm; mass 1.5-3.2kg.

Habitat: Associated with well-watered country; its presence in arid regions is usually confined to riverine strips.

Habits: Nocturnal; mainly solitary, but also found in pairs.

Food: Rats, mice, insects, ground birds, arachnids, reptiles and wild fruit.

Forefoot: 2.6cm.

Hind foot: 3cm.



**Black-backed Jackal**

*Canis mesomelas*



The animal has a reddish-brown body colour, a black saddle on the back, and a bushy, black-tipped tail.

Size: Length 96-110cm; mass 6-10kg.

Habitat: Wide tolerance.

Habits: Both diurnal and nocturnal; found alone, in pairs and family parties.

Food: Mainly carrion, but also small mammals such as rats and mice; insects, vegetable matter, birds, reptiles, sun spiders, scorpions, centipedes and green grass.

Forefoot: 6.5cm.

Hind foot: 6.3cm.



**Serval**     *Felis Serval*



A slender cat with long legs, small head, large ears and spotted and barred coat. The general colour is yellow with black spots.

Size: Length 96-120cm; mass 8-13kg.

Habitat: Confined to areas where there is permanent water; found in the higher rainfall areas.

Habits: Serval are predominantly nocturnal; normally solitary, they are also sometimes seen in pairs and family groups (females with young).

Food: They prey on mainly rats and mice; also other small mammals; birds, frogs, small reptiles, insects and sun spiders.

Forefoot: 5.5cm.

Hind foot: 5cm.



**Caracal:** *Felis caracal*



A stockier cat than the serval, with shorter limbs, a short bushy tail and characteristic tufts on the ears. The overall colour is a reddish tan.

Size: Length 70-110cm; mass 8-13kg.

Habitat: Confined to areas where there is permanent water; found in the higher rainfall areas.

Habits: Serval cats are predominantly nocturnal; normally solitary, they are also sometimes seen in pairs and family groups (females with young).

Food: They prey on mainly rats and mice; also other small mammals, birds, frogs, small reptiles, insects and sun spider.

Forefoot: 5.5cm.

Hind foot: 6cm.



**Burchell's Zebra**

*Equus burchelli*



The common relative of the horse can be distinguished from the two mountain zebras, *Equus zebra* by the yellowish or greyish shadow stripes between the black on the hind-quarters, and also by the absence of a 'gridiron' pattern on top of the rump.

Size: Shoulder height 1.3m; mass 290-340kg.

Habitat: A savannah species, favouring areas of open woodland, open scrub and grassland.

Habits: Generally active throughout the day. Gregarious; lives in small family groups.

Food: Predominantly a grazer, but will sometimes browse and feed on herbs.

Forefoot: 9.5cm.

Hind foot: 10cm.



**Giraffe**     *Giraffa camelopardalis*



There are several varieties of this, the world's tallest animal, in Africa, each with a distinctive reticulate (net-like) pattern. The head has horny projections which the male uses, when fighting, to strike at the legs and neck of its opponent. On these occasions the two combatants stand side on and swing their long necks in wide arcs. The long, rough tongue enables the giraffe to grasp foliage and to strip the leaves of acacias; the copious, viscous saliva it produces helps it to swallow the thorns. The animal can gallop at up to 60km/h but usually defends itself by kicking.

Size: Shoulder height 3.9-5.2m; mass 970-1,400kg.

Habitat: Associated with a wide variety of dry savannah ranging from scrub to woodland; often seen in company of zebra and wildebeest, who benefit from the giraffe's height and ability to survey the horizon.

Habits: Predominantly diurnal. Gregarious; a loose herd structure comprises females and young, bachelor or mixed groups. Bulls are for the most part solitary.

Food: Browser; favours acacia leaves and flowers.

Forefoot: 20cm.

Hind foot: 19cm.



**Warthog**     *Phacochoerus aethiopicus*



An unmistakable pig-like animal, with characteristic tusks, and wart-like protuberances on the face. Skin colour, often determined by the colour of the mud in which it wallows, is generally grey.

Size: Shoulder height 70cm; mass 60-105kg.

Habitat: Grassland, floodplains, open areas including open woodlands.

Habits: Diurnal; groups, called sounders, consist of an adult male, adult female and her offspring.

Food: They are generally vegetarian.

Forefoot 8.5cm.

Hind foot: 7.5cm.

Roland Ward: 13

SCI: 30



**Bushpig** *Potamochoerus porcus*



This animal overall colour varies, but it is commonly reddish brown, with a dorsal crest of long, white hair.

Size: Shoulder height 55-88cm; mass 60-115kg.

Habitat: Bushpigs are predominantly nocturnal, with some daytime activity. Gregarious; they move in groups of six to eight

Food: Omnivorous.

Forefoot: 8cm.

Hind foot: 7.5cm.

Roland Ward: 5' 4/8

SCI: 11



**Common Duiker**     *Sylvicapra grimmia*



This smallish antelope, whose colour varies from a grizzled grey to a yellowish-fawn, has a characteristic black band running from nose to forehead. Only the males carry horns, which are short and straight.

Size: Shoulder height 50cm; mass 18-21kg.

Habitat: Needs bush or shelter, shade and food. Wide tolerance; has a preference for savannah woodland.

Habits: Solitary; found in pairs when females are in oestrus; also female with single young. Mainly active in the early morning, and late afternoon extending well into.

Food: Almost exclusively a browser.

Forefoot: 4cm.

Hind foot: 4cm.

Roland Ward: 4' 4/8

SCI: 11



**Steenbuck**     *Raphicerus campestris*



The upperparts of the steenbuck are reddish brown, the under parts white. Ears very large; only the males carry horns.

Size: Shoulder height 50; mass 11kg.

Habitat: Associated with open grassland with some cover; also found in open woodland.

Habits: Solitary, except when the male is attending female in oestrus or female is still with her young. Mainly diurnal; active in early morning and late evening.

Food: Both browse and graze.

Forefoot: 4cm.

Hind foot: 4.2cm.

Roland Ward: 4' 4/8

SCI: 11



**Klipspringer**      *Oroetagus oroetagus*



The colour of this agile antelope varies from speckled, yellowish brown to greyish brown; the coat has a coarse texture that blends in with the rocks among which it lives. Only the male carries horns.

Size: Shoulder height 60cm; mass 10-13kg.

Habitat: Restricted to a rocky habitat.

Habits: Found in pairs, singly, or in small family groups. Brows or grazes on the flatter ground surrounding its habitat, but if disturbed will run for rocky shelter. Active in early morning and late afternoon.

Food: Predominantly a browser.

Forefoot: 2.2cm.

Hind foot: 2.2cm.

Roland Ward: 4' 1/8

SCI: 11



**Springbuck**     *Antidorcas marsupialis*



The medium-sized antelope's back is a bright cinnamon-brown with a broad, dark reddish brown horizontal band separating the upperparts from the white under parts. Both sexes carry horns. The common name is derived from the way the animal springs or bounds with its back arched to expose a white ridge of hair, a display known as 'pronking' and said to advertise its fitness to other springbuck and to predators.

Size: Shoulder height 75cm; mass 37-41kg.

Habitat: The animal is associated with the arid regions and open grassland.

Habits: Gregarious. Active in the early morning and late afternoon; some activity after dark.

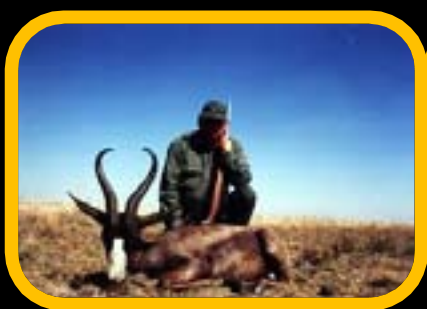
Food: Brows and graze.

Forefoot: 5.5cm.

Hind foot: 5.8cm.

Roland Ward: 14     Black-14     White-14

SCI: 30     Black-30     White-28



**Impala**     *Aepyceros melampus*



The under parts of this graceful, medium-sized antelope are rich reddish brown, the flanks reddish pale fawn, the under parts white. Only the males carry horns. Hind legs have black glands just above the hoof, called metatarsals, which are diagnostic.

Size: Shoulder height 90cm; mass 40-50kg.

Habitat: Associated with woodland.

Habits: Gregarious.

Food: Both browse and graze.

Forefoot: 5cm.

Hind foot: 5cm.

Roland Ward: 23' 5/8

SCI: 54



**Waterbuck:** *Kobus ellipsiprymnus*



The colour of this large antelope's under parts is variable: it may be a dark brownish grey or greyish brown, grizzled with white and grey hairs. A characteristic white ring encircles the rump. Only males carry horns.

Size: Shoulder height 1.3m; mass 250-270kg.

Habitat: Associated with water.

Habits: Gregarious; active during all but the hottest hour of the day.

Food: Predominantly a grazer, but also browses.

Forefoot: 9cm.

Hind foot: 8.5cm.

Roland Ward: 28

SCI: 70



**Bushbuck**     *Tragelaphus scriptus*



Individual bushbuck vary in size over their range. Their general colour also varies, from chestnut to dark brown. All the animals, however, have a conspicuous white collar, with white spots on cheeks and flanks; flanks and hind quarters sometimes show stripes. Only males carry horns.

Size: The average shoulder height is 80cm; mass 45kg.

Habitat: Closely associated with riverine or other types of underbrush close to water supplies.

Habits: Generally solitary; also occurs in small groups of two or three. Active at night; in early morning and late evening.

Food: Mainly a browser but also grazes.

Forefoot: 4.8cm.

Hind foot: 4.5cm.

Roland Ward: 15

SCI: 33



**Kudu**     *Tragelaphus strepiceros*



A large fawn-grey antelope with 6-10 vertical white stripes on the sides. Usually, only the males carry horns, which are long and deeply spiralled.

Size: Shoulder height 140-155cm; mass 180-250kg.

Habitat: Savannah woodland.

Habits: Gregarious; occurs in small herds, usually up to four or so individuals. Adult males may be solitary. Most active in the early morning and late afternoon.

Food: A browser.

Forefoot: Male: 9.5cm, Female: 8.5cm.

Hind foot: Male: 9.5cm, Female: 8cm.

Roland Ward: 53' 7/8

SCI: 121



**Nyala**      *Tragelaphus angasii*



A largish antelope; the sexes markedly different in appearance. The male has a shaggy, greyish coat with a white crest on the back and long hair on the neck, belly and rump, and 9-14 vertical white stripes down its sides. The female also carries the stripes but is much smaller, yellowish-brown to chestnut in colour, and lacks shaggy hair. Only the males carry horns.

Size: Shoulder height 1.15m; mass 62-108kg.

Habitat: Prefers thickets in dry savannah woodland, riverine woodland with thickets, and dry forest.

Habits: Gregarious; occurs in groups of usually two or three individuals, but herds can number up to 30. Solitary males are also common. Both diurnal and nocturnal.

Food: Predominantly a browser.

Forefoot: 7cm.

Hind foot: 6.5cm.

Roland Ward: 27

SCI: 63



**Eland**      *Taurotragus oryx*



The largest of Africa's antelopes, a light rufous-fawn in colour, with narrow white stripes down the flanks. Both sexes carry horns; the male's are much heavier than the female's.

Size: Shoulder height 1.7m; mass 450-700kg.

Habitat: Shows wide tolerance.

Habits: Occurs in small herds, but occasionally in huge aggregations of more than 1,000. Active in mornings and afternoons.

Food: Mainly a browser, but grazes fresh, sprouting grass after fire.

Forefoot: 14cm.

Hind foot: 13cm.

Roland Ward: 35

SCI: 77



**Gemsbuck**

*Oryx gazelle*



A large antelope bearing conspicuous black markings on the body and face. The upperparts and flanks area pale fawn-grey, under parts white, with a broad, dark-brown band in between. Horns are straight, rapier-like, the female's more slender than the male's.

Size: Shoulder height 1.2m; mass 210-240kg.

Habitat: Open, arid country.

Habits: Gregarious; occurs in herds up to 12, though solitary males are common. Active during early morning and late afternoon.

Food: Mainly graze.

Forefoot: 13cm.

Hind foot: 11.5cm.

Roland Ward: 40

SCI: 88



**Sable Antelope**     *Hippotragus niger*



A large, handsome species, the old males of which are black, the females a very dark brown, both with white under parts. Both sexes carry horns, which are more slender in females.

Size: Shoulder height 135cm; mass 180-270kg.

Habitat: Savannah woodland.

Habits: Gregarious; occurs in herds of 20-30 individuals.

Forefoot: 9.5cm.

Hind foot: 9cm.

Roland Ward: 41' 7/8

SCI: 100



**Blesbuck**     *Damaliscus dorcas phillipsi*



A brown antelope with white under parts and a white face blaze divided just below the eyes by a narrow brown band. Both sexes carry horns.

Size: Shoulder height 95cm; mass 70kg.

Habitat: Grassland, with source of water.

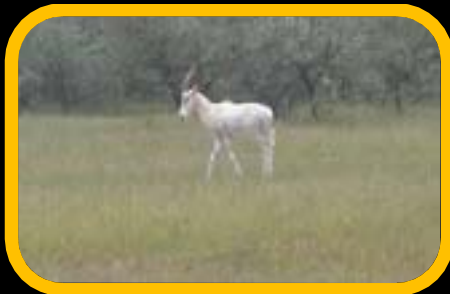
Habits: Gregarious; diurnal; active in early morning and late evening.

Forefoot: 7cm.

Hind foot: 6.5cm.

Roland Ward: 16' 4/8

SCI: 39



**Tsessebe**     *Damaliscus lunatus*



A largish antelope with a long, narrow face, shoulders that stand conspicuously higher than the rump, and a dark reddish brown body with a distinct purplish sheen.

Size: Shoulder height 1.2m; mass 126-140kg.

Habitat: Open savannah woodland close to grassland plains; need water and shade.

Habits: Gregarious; Tsessebe are active mainly in the morning and evening.

Food: Almost exclusively a grazer.

Forefoot: 8cm.

Hind foot: 8cm.

Roland Ward: 15

SCI: 40



**Red Hartebeest**     *Alcelaphus buselaphus*



A medium-sized, high-shouldered animal, generally a reddish brown in colour but this varies according to the race and region and may be yellow-fawn or tawny. Both sexes carry horns, the male's heavier in build than those of the female.

Size: Shoulder height 125cm; mass 120-150kg.

Habitat: Associated with open country.

Habits: Gregarious; at its most active in the early morning and late afternoon.

Food: Predominantly a grazer.

Forefoot: 9cm.

Hind foot: 8.5cm.

Roland Ward: 23

SCI: 62



**Black Wildebeest**

*Cannochaetes gnou*



This relative of the antelopes is generally buffy brown in colour and has a characteristic tail with long, white hair reaching to the ground. Both sexes carry horns.

Size: Shoulder height 1.2m; mass 100-180kg.

Habitat: Open plains, grasslands and Karoo country.

Habits: Gregarious; active at dawn, in the early morning, late afternoon and after sunset.

Forefoot: 9cm.

Hind foot: 8.5cm.

Roland Ward: 22' 7/8

SCI: 72



**Blue Wildebeest**

*Connochaetes taurinus*



Similar in appearance to the black wildebeest but dark grey in colour and with a mane of long black hair, and long, black hair at the end of its tail. Both sexes carry horns; the female's horns are lighter in build than those of the male's.

Size: Shoulder height 1.5m; mass 250kg.

Habitat: Associated with savannah woodland and open grassland.

Habits: Gregarious; active in the morning and afternoon.

Forefoot: 11cm.

Hind foot: 9.8cm.

Roland Ward: 28' 4/8

SCI: 70



**Ostrich**    *Strutio camelus*



The world's largest living bird. Males are black with white wings, female's brownish grey.

Size: Up to 2m high.

Habitat: Bushveld to desert.

Habits: Found in flocks of 30-40 birds when not breeding.

Food: Grass, berries, seeds, succulent plants, small reptiles and insects.

Spoor: Legs are long with only two toes. The eggs are unmistakable, large and laid in communal, earthen nests which will be defended by a single male. The call is a deep boom, not unlike the roar of a lion (for which it is often mistaken). Incidental signs include large discarded feathers.



**Bontebok**     *Damaliscus dorcas dorcas*



A medium-sized antelope with a rich dark-brown body colour and a contrasting white rump patch, under parts and face blaze. The latter runs down between the eyes and, unlike that of the blesbuck is not divided by a transverse brown band. The horns of the females are more slender than those of the male.

Size: Shoulder height 90cm; mass 62kg.

Habitat: Natural distribution restricted to one area.

Habits: Gregarious; diurnal, mainly active in the early morning and late afternoon.

Food: The bontebok is almost exclusively a grazer.

Forefoot: 8cm.

Hind foot: 7.5cm.

Roland Ward: 14

SCI: 36



## Mountain Reedbuck

*Redunca fulvorufula*



The medium-sized antelope's overall colour is greyish on the under parts, the neck reddish, the under parts white. Its coat is soft and woolly, its tail bushy. The characteristic gland located just below the ears appears as a black patch. Only the males carry the short, heavily ridged, forward pointing horns.

Size: Shoulder height 72cm; mass 30kg.

Habitat: The dry grass covered, stony slopes of hills and mountains where there is cover in the way of bushes and scattered trees.

Habits: Usually occurs on small groups of three to six, but also in herds of up to 30. The animal is at its most active in the early mornings, late afternoons and at night.

Food: The mountain Reedbuck is almost exclusively a grazer.

Forefoot: 4.5cm.

Hind foot: 4.5cm.

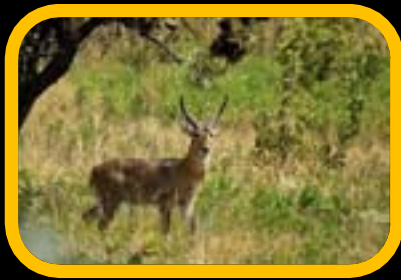
Roland Ward: 6' 7/8

SCI: 11



**Common Reedbuck**

*Redunca arundinum*



The reedbuck's overall body colour varies from brown, tending to grey or buffy grey, yellow or buffy yellow or greyish brown. The back is usually slightly darker; the under parts white. Only the males carry horns.

Size: Shoulder height 80-95cm; mass 50-70kg.

Habitat: Essential habitat requirements include cover, in the form of grass and reed beds, and a good water supply; the animal is usually found in vleis with a wet drainage area or grassland adjacent to streams, rivers or other areas of permanent water.

Habits: Lives in pairs or family parties.

Food: Almost exclusively a grazer.

Forefoot: 6.5cm.

Hind foot: 6.5cm.

Roland Ward: 14

SCI: 21



**Roan Antelope**      *Hippotragus equinus*



A large, greyish-brown antelope with a black face, a contrasting white patch around the nose and mouth and a white patch on the cheek.

Size: Shoulder height 110-150cm; mass 220-300kg.

Habitat: Confined to lightly wooded savannah with extensive open areas of medium to tall grasses and available water.

Habits: Gregarious; occurs in small herd of 5-12 individuals, sometimes up to 25. Active from sunrise, until mid-morning, and in the late afternoon.

Food: Predominantly a grazer, but also a browser.

Forefoot: 11cm.

Hind foot: 11cm.

Roland Ward: 27

SCI: 68



**Buffalo**     *Syncerus caffer*



A massive animal, ox-like in general appearance. Old males are black; females show a tinge of reddish brown. The curved horns are huge in old adult males; those of the females are lighter.

Size: Shoulder height 1.4m; mass 550-700kg.

Habitat: The buffalo prefers open woodland savannah and needs a plentiful supply of grass, shade and water.

Habits: Gregarious; occurs in herds of up to several hundred. Most active in the evening, at night and in the morning.

Food: Mainly a grazer, but also browses.

Forefoot: 18cm.

Hind foot: 21cm.

Roland Ward: 42

SCI: 100

